



Manufacturers of Reliable
Industrial Valves and Controls

POWERING
PRECISION,
DELIVERING CONTROL.



INTRODUCTION

Space Valves And Controls Is An ISO 9001 : 2015 Certified Industrial Valves Manufacturing Company, Promoted By A Group Of Technocrats With Decades Of Experience Of Working With Valve Users And Customers In Various Fields. The Prime Objective Of The Company Is To Achieve The Highest Level Of Customer Comfort (Much Above Customer Satisfaction) By Providing Reliable Products And Services To Customers Which Will Make Them Our Permanent Business Partners.

OUR PRODUCTS

EXCEL IN THE MARKET ON ACCOUNT OF
THE FOLLOWING

Prudence And Excellence In Design

Space Valves & Controls Pvt Ltd Are Meticulously Designed To Meet The Customer Needs And Requirements, Comply With The National And International Industry Specific Standards. The Design Excellence Makes Our Products Stand Above Others In The Market.

Manufacturing Process

The Manufacturing Process Is Formulated With Stringent Checks To Ensure That The Products Are Manufactured As Per The Design So That They Are Flawless In Their Performance. Quality Is Given The Utmost Importance At Every Stage And All Corners Of Manufacturing Gamut.

Testing And Documentation

The Valves Are Religiously Tested As Per The System Requirement And All Records Are Maintained For Reference And Product Certification.

Excellent Finish / Aesthetics

The Product Finish / Aesthetics Given Utmost Importance And The Valves Are Provided The Necessary Protection Against Corrosion By Our Standard Painting Process / Customer Specified Painting Requirements.

The Dedicated Team

The Dedicated Team Of Engineers And Technicians With Their Vast Experience And Expertise Add The Value To The Product And Services Offered By Us, Leading To Customer Comfort

PRODUCTS WE MAKE

OVERVIEW

01 BUTTERFLY VALVES

- RESILIENT SEATED WAFER BUTTERFLY VALVES
- FLANGED END RESILIENT SEATED BUTTERFLY VALVES
- DOUBLE OFFSET BUTTERFLY VALVES
- TRIPPLE OFFSET BUTTERFLY [METAL SEATED] VALVES Wafer And Flanged Valves
- TEFLON LINED BUTTERFLY VALVES

02 BALL VALVES

- Two Piece Flanged Ball Valves
- Two Piece And 3 Pcs Screwed End / Socket Weld Ends And 3 Pcs Flanged End Valves
- Forged 3 Piece Ball Valves
- Teflon Lined Ball Valves
- CAST 3 Way Ball Valves
- Top Entry Ball Valve
- Actuated Valves
- Electrically Actuated Valves

03 GATE, GLOBE and CHECK VALVES

- CAST VALVES
- Forged Valves (Gate, Globe And Check)
- Dual Plate Check Valves
- Wafer Check Valves
- Non-Slam Check Valves
- Wafer Single Disc Check Valves

01 BUTTERFLY VALVES

RESILIENT SEATED WAFER BUTTERFLY VALVES

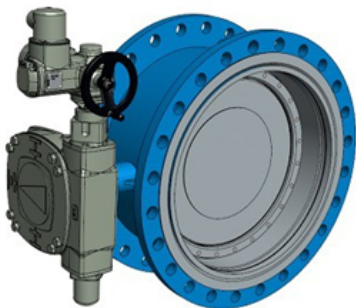
The Valves May Be Wafer Type / Lugged Wafer Type With Lever Operation (Normally Up To DN150 (6") And Quarter Turn Gear Operated For Sizes DN200 And Higher. The Valves Are Bi-Directional And Suitable For On/Off And Control Applications. The Applicable Standards Are

Design STD	: API609 / BS5155 / AWWA C150 / IS13095
Face To Face	: ASME B 16.10 / IS13095
To Suit	: Flanges As Per ANSI B16.5 #150, / BS10
Size	: DN40 To DN 900 (1.5" To 36")
Body	: CI/DI /WCB/CF8/CF8M Etc..
Disc	: DI /WCB/CF8/CF8M/NAB
Seat	: NBR/EDM/VITON /SILICON / Food Grades
General Applications	: Water Treatment Plants,Utility Lines, HVAC, Gases, Oil And Compressed Air With Powder



FLANGED END RESILIENT SEATED BUTTERFLY VALVES

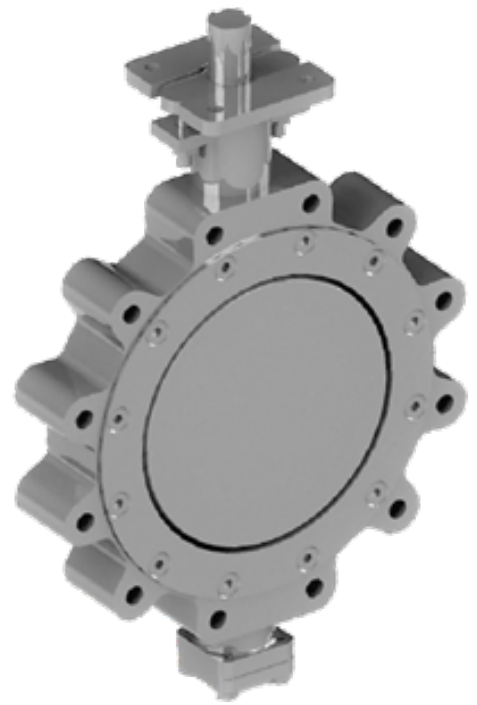
Design STD	: API509 / BS5155 / AWWA C150 / IS13095
Face To Face	: ASME B 16.10 / IS13095
To Suit	: Flanges As Per ANSI B16.5 #150, / BS10
Size	: DN40 To DN 900 (1.5" To 36")
Body	: CI/DI /WCB/CF8/CF8M Etc..
Disc	: DI /WCB/CF8/CF8M/NAB
Seat	: NBR/EDM/VITON /SILICON / Food Grades
Pr. Rating	: PN10 And PN16



DOUBLE OFFSET BUTTERFLY VALVES

The Valves May Be Wafer Type / Lugged Wafer Type / Flanged Type. The Valves Are Bi-Directional And Suitable For Manual And Auto Operation (Pneumatic / Electrical) For On/Off And Control Applications. The Valves Can Be Soft Seated Or Metal Seated.

Design STD	: API509 / BS5155 / AWWA C150 / IS13095
Face To Face	: ASME B 16.10 / IS13095
To Suit	: Flanges As Per ANSI B16.5 #150, / #300
Pressure Rating	: #150 And #300
Size	: DN50 To DN 600 (1.5" To 24")
Body	: WCB/CF8/CF8M Etc..
Disc	: CF8/CF8M/NAB
Soft Seat	: RTFE , PTFE,UHMWPE (Upto 200oC)
Metal Seat	: SS316 Etc. (Upto 500oC)
General Applications	: Gases Like Nitrogen,Ammonia, Chlorine, Air Including HVAC, Steam, Potable Water, Petrol, Diesel and Other Hydrocarbons, Liquids With Abrasive And Suspended Particles.



TRIPPLE OFFSET BUTTERFLY [METAL SEATED] VALVES WAFER AND FLANGED VALVES.

Applicable Standards

Design STD	: ANSI B16.34 DIN 3840
Flange Drilling	: ANSI B16.5, ANSI B16.47 (Series A & B),
Face To Face	: ISO 5752, ANSI B16.10, API 609.

For Flanged Valves & API 609 For Wafer And Lugged Design of Suitable Class.

Temperature Range	: From -50 °C To 500°C.
Leakage	: As Per ISO 5208 And EN12266-1 (Rate A)
Valve Inspection And Testing	: API 598
Top Mounting	: ISO 5211

Material Of Construction

Body And DISC	: WCB/LCB/ CF8/CF8M, Etc. (With Stellite seats)
Seat	: SS316 / Duplex Stainless Steels. (Solid/ Laminated With Graphite)

SIZE & PRESSURE RATING

#150 DN 150 (6") To DN200 (48")
 #300 DN 150 (6") To DN600 (24")



TEFLON LINED BUTTERFLY VALVES

Lined Butterflyvalves Are Used For Highly Corrosive Applications Like Concentrated Acids And Alkali.



Size Range	: DN40 To DN 600
Body	: DI / WCB With Replaceable / Moulded PTFE /FEP/PFA Liner Of 3mm Thick.
Disc	: SS304 /SS316 With Minimum 3mm Thick PFA Moulding
Pr. Rating	: PN10 Upto 300NB And PN6 Above 300NB
Body Ends	: PN10 Upto 300NB And PN6 Above 300NB
Actuator Mounting Flange	: Wafer /Lugged Up To 300NB And Double Flanged Above 300NB.

MANUFACTURING STANDARDS

Design &Dimensions Standard : API 609
Test Standard : ISO 9393-2/API 598 / BS EN 12266-1; 2003
F To F Dimension : API 609 CATEGORY'A'
End Connection : ANSI B16.5; 150#;

02 BALL VALVES

Space Ball Valves Are By Default

- **Antistatic** – Housing And Internals Are Electrically Connected to Avoid Electrostatic Potential Built Up Which Can Trigger Explosion In Oil And Gas Applications.
- **Anti Blow Out Design** – The Stem Is Designed To Ensure That It Will Never Get Blown Away (Due To Occasional Pressure Raise) While At Service, Leading To Accidents.
- **Fire Safe** – Space Ball Valves Are Designed To Be Fire Safe.

NACE compliance (NACE MR -0.1 -75) For Wetted Parts And Fasteners Can Be Provided on Request. Fugitive emissions Compliance Testing As Per EN-ISO 15848-1, Cryogenic Testing And Jacketed Valves Also Can Be Provided Against Specific Customer Needs. Manual Operations (Wrench For Small Valves And Quarterturn Gear Boxes For Larger Sizes) Pneumatic and Electrical Actuators can Be Provided.

TWO PIECE FLANGED BALL VALVES

The Valves May Be Full Bore Or Reduced Bore And Are With Lever Operation (Normally Up to DN150 (6")) And Quarter Turn Gear Operated For Sizes DN200 And Higher. The Valves Are Bi-Directional And Suitable For On/Off And Control Applications. The Applicable Standards Are

Design STD	: API6D / BS5351
Face To Face	: ASME B 16.10
To Suit	: Flanges as Per ANSI B16.5
Size	: DN15 to DN 600 (0.5" To 24")
Body	: WCB/CF8/CF8M Etc.
Ball	: CF8/CF8M
Seat	: PTFE /Carbon Or Glass Filled PTFE
General Applications : Petroleum Processing, Chemicals And Process Industries.	



TWO PIECE AND 3 PCS SCREWED END / SOCKET WELD ENDS AND 3 PCS FLANGED END VALVES

Bore	: Full / Regular
Size Range	: 1/4" - 2" In Screwed End /SW End (1 Piece /3 Piece) 1/2" - 8" In Flanged End (3 Piece)
Body	: WCB /CF8/CF8M
Ball	: SS304 /SS316 /CF8 /CF8M Etc.
Seat	: PTFE /RTFE
Pr. Rating	: #150 / #300
Operation	: Manual Lever/ Gear / Pneumatic Operation



FORGED 3 PIECE BALL VALVES

Design STD	: API509/ BS5155
Face To Face	: Mfgs. Standard Size : 1/4" To 2"
Body	: A105 / ASTM A183 F304 / F316 / F316L
Ball And Stem	: SS304/ 316 / 316L
Seat	: PTFE / RTFE (Glass /Carbonfilled) / Metal
Pr. Rating	: #800 And # 1500
Bore	: Regular (Reduced) And Full Bore.

THREE WAY VALVES ARE ALSO AVAILABLE with T Port And L Port Options.

TEFLON LINED BALL VALVES

Pr. Rating	: Body 15bar And Seat 10bar
Spark Test	: 15KV
Body	: DI With 3mm PFA Lining.
Ball And Internals	: SS With 3mm PFA/FEPlining.
Temp	: Max 208oC
Size	: 1/2" To 8"



CAST 3 WAY BALL VALVES

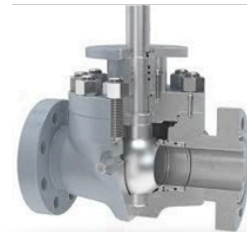
Design STD	: API509 / BS5155/ AWWA C150 /IS13095
Face To Face	: Mfgs. Standard Size : 1/2" To 8"
Body	: WCB/CF8 /CF8M
Ball And Stem	: SS304/ 316 / 316L
Seat	: PTFE / RTFE (Glass /Carbonfilled)
Pr. Rating	: #150 And # 300
Bore	: Regular (Reduced) And Full Bore.
PORT TYPE	: L Port / T Port
Operation	: Manual and Actuated (Pneumatic / Electrical)

TOP ENTRY BALL VALVE

The Valves May Be Full Bore Or Reduced Bore And Are With Lever Operation (Normally Up To DN150 (6")) And Quarter Turn Gear Operated For Sizes DN200 And Higher. The Valves Are Bi-Directional And Suitable For On/Off And Control Applications.

The Applicable

Size	: DN25to DN 600 (1" To 24")
Pressure Rating	: #150 ,#300, #600 And #900 Body:WCB/CF8/CF8M, DuplexSS Etc.
Ball	: CF8/CF8M, Duplex SS Etc
Seat	: PTFE /Carbon Or Glass Filled PTFE
Seat Design	: Floating In Small Sizes And Trunnion Mounting In Larger Sizes.
General Applications	: Petroleum Processing, Chemicals And Process Industries.



Applicable Standards Are

Design STD	: API6D / BS5351
Face To Face	: ASME B 16.10
To Suit	: Flanges As Per ANSI B16.5



ACTUATED VALVES

- We Supply Actuated Ball Valves And Butterfly Valves With Pneumatic Actuators (Rack And Pinion / Scotch Yoke Type) With Of/Off As Well As Control Accessories.
- Weather Proof / Ex Proof Accessories Like
 1. Solenoid Valves
 2. Limit Switchboxes With Mechanical/ PCF Sensors
 3. Air Filter Regulator
 4. Positioners – Pneumatic / Electro Pneumatic
 5. Quick Exhaust Valves / Volume Boosters / Air Lock Relays Etc.
 6. Manual Over Rides – De-Clutchable Gear Boxes.

ELECTRICALLY ACTUATED VALVES

Electrically Operated Ball Valves, Butterfly Valves, Gate Valves And Globe Valves Can Be Supplied For ON /Off Duty And Control Duty Applications.



03 GATE, GLOBE & CHECK VALVES

CAST VALVES

Bonnet Type	: Bolted OS & Y / Pressure Sealed
Design STD	: API 600 / BS1414 / API 6D
Face To Face	: As Per ASME B16.10
Ends	: Butt Weld / Flanged Ends
Testing Standard	: As Per ISO 5208 / API 598
Pr. Rating	: #150 To #1500
Size	: 1/2" To 24"
Body & Bonnet	: WCB / CF8 / CF8M / LCB
Wedge	: WCB / C-15 / CF8 / CF8M
Seat	: 13% Cr / Stellite -6 (Hard Face Welded)
Temperature Range	: -100o C To 800o C
Operators (Gate & Globe)	: Hand Wheel, Gear Box / Electric / Pn. Actuated.



FORGED VALVES (GATE, GLOBE AND CHECK)

Type	: Bolted Bonnet OS & Y / Seal Welded
Design Code	: API 602
Ends	: Screwed / Socket Weld / Butt Weld
Testing Standard	: As Per API 598
Pr. Rating	: #800 To #2500
Size	: 10NB To 50NB
Body & Bonnet	: A105 / A182 F304 / F316 / F316L / Monel Etc.
Wedge / Plug	: WCB / C-15 / CF8 / CF8M
Seat	: 13% Cr / Stellite -6 (Hard Face Welded)
Temperature Range	: -100o C To 800o C
Operators	: Hand Wheel, Electric
Flanged Valves	: Available as Optional. Cryogenic Valves, With Testing are Available.



DUAL PLATE CHECKVALVES

Design STD	: As Per API 6D/ API 594
Face To Face	: As Per ASME B16.10
Ends	: Wafer / Lugged / Flanged
Testing Standard	: As Per API598
Pr. Rating	: #150 To #2500
Size	: 2" To 24"
Body	: DI/WCB/ CF8 /CF8M/ LCB, Etc.
Door	: WCB / C-15 /CF8 / CF8M, Etc.
Spring	: SpringSteel/SS304/SS316/Inconel Etc.
Metal Seat	: 13% Cr / Stellite –6 (Hard Face Welded)
Soft Seat	: EPDM/NBR/PTFE/VITON
Temperature Range	: -100o C To 800o C



WAFER CHECK VALVES

Design STD	: As Per API 6D
Face To Face	: As Per ASME B16.10
Ends	: As Per ASME B16.5
Testing Standard	: As Per API 6D
Pr. Rating	: #150 To #300
Size	: 2" To 24"
Body/Disc	: DI/WCB / CF8 /CF8M/ LCB, Etc.
Metal Seat	: 13% Cr / Stellite–6 (Hard Face)
Soft Seat	: EPDM/NBR/PTFE/VITON
Temp. Range	: -100o C To 200o C

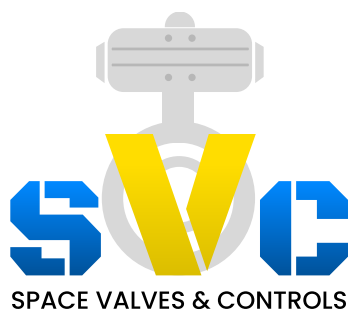
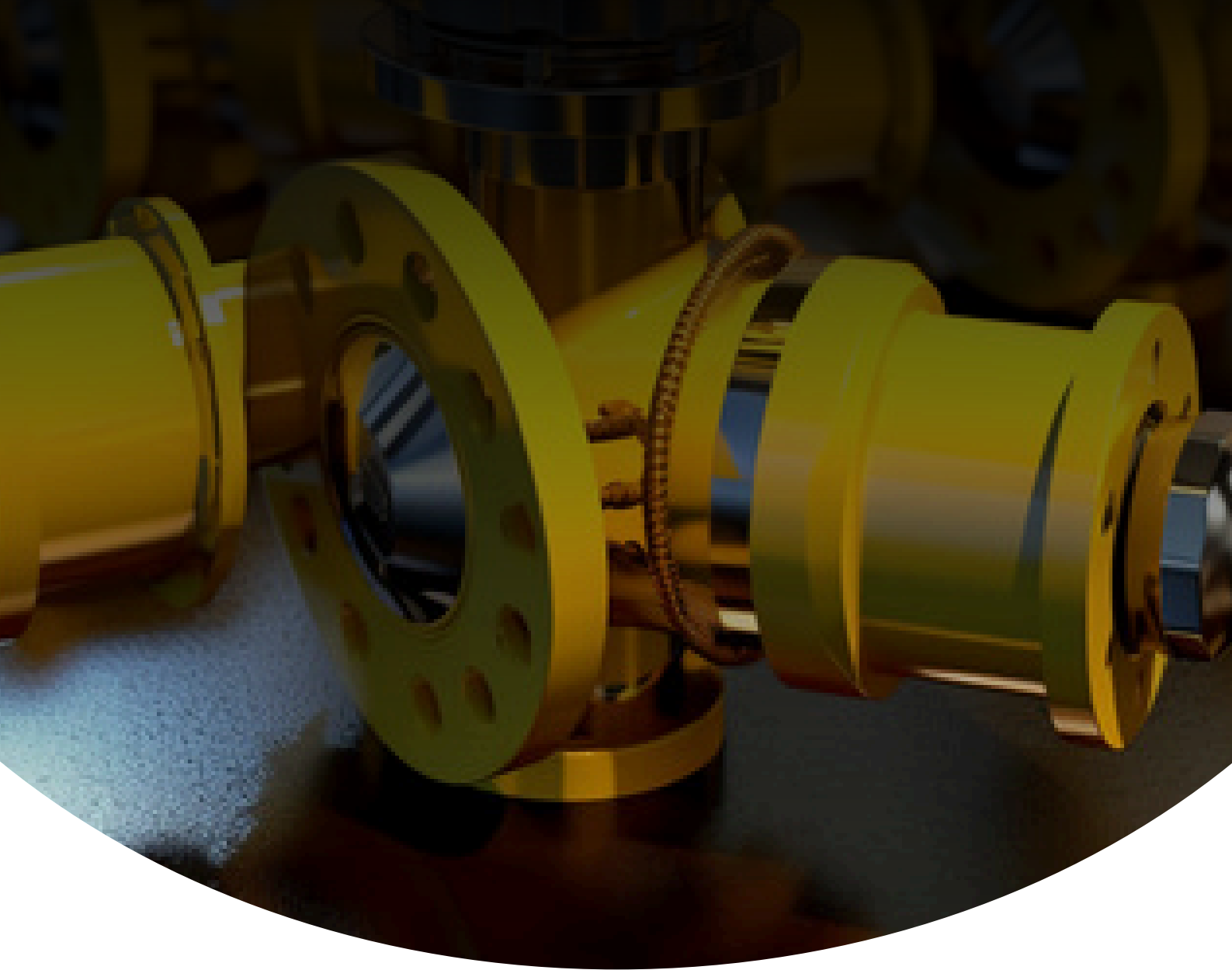
NON-SLAM CHECK VALVES

Face To Face	: API 594
Ends	: Wafer Type
Testing Standard	: API 598
Pr. Rating	: #150 To #300
Size	: 1" To 8"
Body	: CF8 /CF8M
Disc	: CF8 / CF8M
Seat	: Base Material / Stellite-6
Temp. Range	: -100o C To 200o C



Wafer Single Disc Check Valves

Face To Face	: EN 558-1 (Series16)	Seat	: Base Material / ST 6 (Hard Face)
Ends	: Wafer Type	Temp. Range	: -100o C To 200o C
Testing Standard	: MSS-SP-61	<i>Counter Weightoption With / Without Hydraulicdamping Is Available.</i>	
Pr. Rating	: #150 To #300		
Size	: 2" To 24"		
Body	: CA15 / CF8 /CF8M		
Disc	: C-15 /CF8 / CF8M		



ADDRESS

Lorem Ipsum is simply dummy text of the printing and typesetting industry.